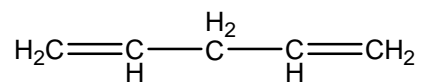
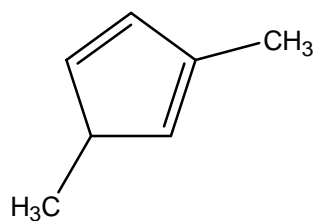




c.



d.



3. Write structures for the following alkenes. If the compound can show *cis-trans* isomerization or the name is ambiguous, clearly indicate which structure you have drawn. If the structure can show geometric isomerization, clearly indicate which structure you have drawn using the *E-Z* system.

a. 3-methyl-pent-2-ene

---

b. 3-chlorocyclohexa-1,4-diene

---

c. 3-bromo-2-chloro-pent-2-ene

---

d. 3-ethylhexa-2,4-diene

---

e. 3,7-dichloroocta-2,5-diene

---

f. 3-bromo-(3*Z*,5*E*)-octa-3,5-diene